

Maple Lake Improvement District Wright County
PO Box 460
Maple Lake, Minnesota 55384

Date: November 19, 2019

To: Wright County Board of Commissioners, Maple Lake Township, MN DNR, MN PCA

From: Mike Raiche, Chairman, Maple Lake Improvement District Wright County

Subject: Annual Report

The first annual meeting of the Lake Improvement District Wright County (MLIDWC) was held on Saturday, August 4, 2018 at the Maple Lake Township Hall, 6298 Bishop Avenue NW, Maple Lake, MN 55313. Meeting notices were mailed, posted and published as required. A total of 59 people attended, of which 32 were property owners eligible to vote.

At the meeting, general discussions were held regarding lake property owner priorities, resulting in a vote of 28 for and 3 against an assessment of \$137.63 per property in 2019. The assessment breaks down to \$32,330 for invasive species monitoring and control, \$6,000 for culvert maintenance and renewal projects, and \$1,875 for administrative costs such as postage, printing, mailing, insurance and notice publication.

During 2019, the entire budgeted amount of \$32,330 for weed control was committed to PLM, Inc., of which half has been paid, with the remainder to be paid in December 2019, on receipt of the October assessment proceeds from the Wright County Treasurer's Office. Approximately \$2,000 has been spent of the amount earmarked for culvert projects, related to beaver dam and bog removal. This is not reflected in the attached assessment vs payments schedule attached, as it was paid after the report was generated. This will leave an uncommitted and unspent balance in the culvert fund of approximately \$4,000. Conversations will be held with Wright County Soil and Water regarding which project to prioritize before allocating these funds.

Of the \$1,857 in approved administrative costs, \$841 has been paid, but unreimbursed expenses are anticipated to use most of the remaining balance. Attached are the following documents related to the above activity and the 2020 assessment approved at the Annual Meeting last August. They are also posted on the MLIDC website.

<u>Reference</u>	<u>Description</u>	<u>Pages</u>
A	Notice of 2018 First Annual MLIDWC Meeting	1
B	Minutes of Annual Meeting held August 4, 2018	2
C	Schedule – 2019 Approved Assessment vs. Actual Expenditures	1
D	Notice of 2019 2 nd Annual Meeting Scheduled for August 3, 2019	1
E	Proof of Published Notice – 2019 MLIDWC Annual Meeting	1
F	Agenda – 2019 Annual Meeting	1
G	Minutes of August 3, 2019 Annual Meeting	3
H	Schedule – 2020 Approved Assessment by Category	1
I	Freshwater Scientific Services Lake Weed Survey – May 2019	6
J	Lake Weed PLM Treatment Cost Report 2019	2
K	Website Posting	1

Please feel free to contact me directly with any questions at 612.716.4526.

Regards,



Michael Raiche
Chairman
Maple Lake Improvement District Wright County



MLIDWC

Maple Lake Improvement District Wright County
P.O. Box 460 Maple Lake MN 55358

A

July 1, 2018

Dear Maple Lake Property Owners:

The 1st annual Maple Lake Improvement District Wright County (MLIDWC) meeting will be Saturday, August 4th, 2018 at 8:30AM, at the Maple Lake Township Hall on Co Rd 37. Coffee and donuts will be available at 8:15.

Please note the name change. When registering with the Secretary of State another Maple Lake LID was found in northern Minnesota, necessitating the change to Maple Lake Improvement District Wright County.

Below is the planned meeting agenda:

- A) Status update of LID related lake activities
- B) Vote of the membership for the 2019 Proposed Budget:
 - a. Lake weed spraying expenditure for 2019 \$33,000
 - b. Wright County Soil & Water projects \$ 6,000
 - c. Administrative costs and insurance - 2019 expenses \$ 1,400
(2019 LID member assessment - \$136/yr.)
- C) Election of MLIDWC Board – all board positions.

This initial election by the MLIDWC membership will be for all board members, each having alternating terms lasting one to three years as required by the MLIDC bylaws. The majority of board members (3) must live within the district boundaries as permanent residents.

The election of these director positions will occur following the call for nominations from the floor at the meeting. Absentee ballots are available on request. Completed ballots must be received by the election committee and postmarked no later than five days prior to August 4, 2018 to be counted as a cast ballot at the annual meeting.

Copies of the MLIDWC bylaws, proposed budget, agenda, and minutes of past board meetings are available on the MLIDWC website, <https://www.maplelakepropertyowners.com/>. If you wish to receive printed copies of any of these documents prior to the meeting please contact Mike Raiche via email at medraiche@yahoo.com.

The annual meeting will provide an overview of the MLIDWC activities and is an opportunity for property owners within the assessment district to provide input to the Board for 2019 and future years. You are encouraged to attend.

Sincerely,

Mike Raiche Chairperson, MLID

Board Positions/Terms up for election:

Chairperson - 3yrs.	-expires 2021
Vice Chair - 2 yrs.	-expires 2020
Secretary -1 yr.	-expires 2019
Treasure - 2yrs.	-expires 2020
Director - 3yrs.	-expires 2021

B

**Maple Lake Improvement District Wright County (MLIDWC)
Minutes of the First Annual Membership Meeting
Saturday, August 4th, 2018**

The first annual meeting of the Maple Lake Improvement District Wright County was held on Saturday, August 4th at the Maple Lake Township Hall, 6298 Bishop Avenue NW and Highway 37, Buffalo, Minnesota 55313.

As required by Statute, a Meeting Notice was published in the Howard Lake Harold Journal July 20, 2018, and mailed to all property owners of record per the Wright County Tax Files on July 15, 2018.

In attendance were Mike Raiche, Chairperson, Tony Heying – Vice Chair, Brian Peterson – Secretary, Bob Porter – Treasurer, and Bob Johnson – Director.

In attendance were 59 people, including 32 registered property owners.

The meeting was called to order by Mike Raiche at 8:30AM.

1. Secretary's report:

- A. Future MLIDWC board meetings will be held at the Maple Lake Legion Club Post 131, located at 220 1 St., West, Maple Lake, MN 55358.
- B. Meetings will be the 1st Wednesday of every February, May, August, and November.
- C. Next meeting will be 6:30PM November 11, 2018.

All notices will be posted on the Maple Lake – Lake Property Owners Association, Inc. (ML-LPOA) website under the MLIDWC tab.

2. Treasurer's report:

- A. A non-interest bearing \$5,000 loan for operating capital was received by the MLIDWC from the ML-LPOA in July, 2018 – to be repaid when assessment proceeds are disbursed to the MLIDWC by the Wright County Treasurer.
- B. Current funds available are \$4,813.51, after deducting expenses paid related to printing, mailings, notices, and postage for the annual meeting.
- C. Motion to approve treasurer's report by Betty Thomas, seconded by Julie Moore. Motion approved.

3. Chairperson's report:

- A. Status of LID related activities:
 - i. Discussed past weed delineation reports 2015 through 2018.
 - 1. Bill Ruddle, Weed Control Advisor to the Board, discussed plans/criteria on treating invasive weeds.
 - 2. Numerous comments/questions were taken from the floor about treating more acreage.
 - 3. Because of prior commitments – the board stayed close to the original proposal.
 - ii. Discussed current Wright County Soil & Water proposals and potential future joint projects.
- B. Vote of the membership for the 2019 proposed budget.
 - i. \$32,330 lake weeds spraying expenditure for 2019
 - 1. Betty Thomas made a motion to approve the lake weed expenditure, seconded by Mary Pribyl.

2. 28 approved and 3 opposed – motion approved.
- ii. \$6,000 Wright County soil and water projects
 1. Julie Moore made a motion to approve, seconded by Sue Clausen
 2. 31 approved, no opposed, motion approved unanimously.
- iii. \$1,857 Administrative costs and insurance, approved unanimously.
- iv. Further discussion was held by those opposed to the lake weeds spraying budget. It was felt the assessment should be higher to cover more acreage for treatment next year.
- v. Total 2019 Approved PID Assessment - \$137.63 per assessed property.

4. Election of the MLIDWC board - all positions.

Three requests were made for nominations from the floor. None were received.

Nominations were closed, and a show of hands requested for the entire unopposed slate - 13 attendees voted “for”, with none opposed. A total of 18 ballots were received by mail. Attendees previously submitting a ballot via mail abstained from voting.

Election results are as follows, including hand votes and absentee ballots:

<u>Position</u>	<u>Term Expires</u>	<u>Candidates</u>	<u>Votes Cast</u>	<u>Votes Write-in</u>
Chairperson	2021	Mike Raiche	30	1
		Greg Thomas		
Vice Chair	2020	Tony Heying	30	1
		Betty Thomas		
Secretary	2019	Brian Peterson	30	1
		Mike Raiche		
Treasurer	2020	Bob Porter	31	
Director	2021	Robert Johnson	30	1
		Chris McVey		

Each existing office/director was reelected to their respective position.

Motion to adjourn was made by Bob Porter and seconded by Mike Raiche.

Meeting was adjourned at 9:35 AM August 4th, 2018.

Respectfully submitted;

Brian Peterson

Secretary


Mike Raiche

Chairperson

**Maple Lake Improvement District Wright County (MLIDWC)
2019 Assessment - Payments Against Approved Projects**

Assessment: \$137.63/PID

Approved Projects and Costs							
Aquatic Invasive Species (AIS) Control:	Units:			Assessed		2019 Payments	
	Product/Service	Species	Vendor	Desc.	Price		Count
Pre-Treatment Delineation	All	PLM Inc.	Acres	\$	7.35	100	\$ 735.00
Aquathol K Chemical Application	Curly Leaf Pondweed	PLM Inc.	Acres		573.12	11	6,304.32
Renovate Chemical Application	Eurasian Water Milfoil	PLM Inc.	Acres		1,041.01	25	26,025.25
Subtotal							32,329.57
Wright County Soil & Water							
Culvert Project(s)		TBD			6,000.00	1	6,000.00
Administrative							
County LID Fees One Time Setup		Wright Co.	Members		1.75	292	511.00
County LID Fees Annual Mtc.		Wright Co.	Members		0.40	292	116.80
Lake Monitoring Exp Reimb	All	Volunteers	Actual		630.00	1	630.00
MLID Annual Mailing/Printing		MLID BofD	Members		2.05	292	600.00
Subtotal							1,857.80
							841.75
							1,016.05
Totals							
							\$ 40,187.37
							\$ 17,602.55
							\$ 22,584.82
							Unspent Balance
							\$ 735.00
							4,543.52
							11,025.25
							15,568.77
							6,000.00
							(10.75)
							-
							630.00
							396.80
							1,016.05
							22,584.82

**Maple Lake Improvement District Wright County (MLIDWC)
2019 Available Cash**

Opening Balance		\$ -
Revenues:		
Loan from MLLPOA	5/3/2019	5,000.00
2019 Assessments Received - 1st Half	6/21/2019	21,938.67
Bank Interest	Monthly	4.61
	Total Deposits:	26,943.28
Expenses:		
Meeting Expenses		203.20
County Fees - Assessment Collections		638.55
PLM Payments - Weed Control		16,760.80
MLLPOA - Startup Loan Repayment		5,000.00
	Total Payments:	(22,602.55)
MLIDWC Cash Balance 07/31/2019		\$ 4,340.73

15

0

MAPLE LAKE IMPROVEMENT DISTRICT WRIGHT COUNTY (MLIDWC)
PO BOX 460
MAPLE LAKE, MN 55358

July 8, 2019

Dear Property Owners:

The MLIDWC 2019 Annual Meeting has been scheduled for 8:30AM August 3 at the Maple Lake Township Hall, 6298 Bishop Ave. NW, Buffalo MN. The township hall is on County Road 37 and Bishop Avenue. Coffee and donuts will be available before the meeting.

An agenda will be provided at the meeting. A copy of the proposed 2020 budget is enclosed. This budget will be discussed and voted on by the MLID membership at the meeting.

In addition, there will be an election to fill the secretary position, which expires this year. To date, one candidate, Tom Valenta, a homeowner on Maple Lake, is seeking this office. A vote will occur following a call for any additional nominations from the floor at the meeting.

Requests for absentee ballots can be mailed to the above address, completed, and returned to the election committee to the same address. Absentee ballots should be postmarked no later than five days prior to August 3, 2019 to be counted as a cast ballot at the annual meeting.

At the annual meeting board members will provide an overview of MLIDWC activities during the last year, in conjunction with the Maple Lake – Lake Property Owners Association, Inc. It is also an opportunity for taxpayers to provide input to the Board for projects for the upcoming assessment year. Review of the treatment process this year will be discussed, along with the recommended assessment increase, before being put to a vote.

Copies of the MLIDWC bylaws, proposed budget, agenda, and minutes are available on the MLIDWC website - <https://www.maplelakepropertyowners.com/> and will be available at the annual meeting. If you wish to receive printed copies of any of these documents prior to the meeting please contact Mike Raiche via email at medraiche@yahoo.com.

All property owners in the improvement district receiving this letter are encouraged to attend.

Sincerely,

Mike Raiche
Chairperson
MLIDWC

<u>Name</u>	<u>Position</u>	<u>Years Remaining</u>	<u>Term Expires</u>
Mike Raiche	Chairperson	3	2021
Tony Heying	Vice Chair	2	2020
<u>Brian Peterson</u>	<u>Secretary</u>	<u>Term Expires Aug 2019</u>	<u>2019</u>
Bob Porter	Treasurer	2	2020
Bob Johnson	Director	3	2021

Proof of Documents posted in Papers
Wright County's Paper



Herald Journal Publishing
PO Box 129
Winnetka, MN 55395

Publisher of:
Herald Journal newspaper & Enterprise Dispatch &
Delano Herald Journal. Plus local specialty
publications.

Statement

Date
7/31/2019

Amount Due
\$16.11

Maple Lake Improvement District
PO Box 460
Maple Lake, MN 55358

PLEASE PAY ON STATEMENT
NO INVOICE WILL BE ISSUED

Please Return Upper Portion With Payment

Terms Due On Receipt

Date	Description	Quantity	Rate	Amount	Balance
06/30/2019	Balance forward				0.00
07/19/2019	Notice of Annual Meeting	1	16.11	16.11	16.11

Local Paper

Maple Lake Messenger Page 10 -
July 17, 2019



(43c)

AFFIDAVIT OF PUBLICATION

STATE OF MINNESOTA)
COUNTY OF WRIGHT) ss.

Michele Pawlenty, being duly sworn, on oath says that she is the publisher or authorized agent and employee of the publisher of the newspaper known as the Maple Lake Messenger and has full knowledge of the facts which are stated below:

(A) The newspaper has complied with all the requirements constituting qualification as a qualified newspaper, as provided by Minnesota Statute 331A.02, 331A.07, and other applicable laws, as amended.

(B) The printed _____ Public Notice

which is attached, was cut from the columns of said newspaper, and was printed and published once each week for One successive weeks; it was first published on Wednesday, the 17 day of July 2019, and was thereafter printed and published on every Wednesday to and including Wednesday, the _____ day of _____; and printed below is a copy of the lower case alphabet from A to Z, both inclusive which is hereby acknowledged as being the size and kind of type used in the composition and publication of the notice:

abcdefghijklmnopqrstuvwxyz

BY:

Michele Pawlenty
Publisher

Subscribed and sworn to before me on this

31 day of July 2019
Janet M. Widnesky
Notary Public

F

Maple Lake Improvement District Wright County

Agenda

Annual Meeting: 8-3-19

Location: Township Hall – County Road 37

Time: 8:30

Agenda:

A- Secretary's Report

- a. Handout / On Website – Tony Heying
- b. <https://www.maplelakepropertyowners.com/mlid/>

B- Treasure's report

- a. Bob Porter – Power Point

C- Budget overview

- 1) LID dollars 2019
 - a. Dollars Spent
- 2) Lake Water Quality Survey June 2019
- 3) Treatments – CLPW / EWM - June 2019
- 4) Estimated target amounts 2020
 - a. Vote

D- Elections 2019 (Secretary Position)

- a. Nominations
- b. Tom Valenta

E- New Business

- a. Meeting date change – discussion
- b. High Water
- c. Floor Discussion Topics

6

Maple Lake Improvement District Wright County (MLIDWC)
Minutes of the Second Annual Membership Meeting
Saturday, August 3rd, 2019

The second annual meeting of the Maple Lake Improvement District Wright County was held on Saturday, August 3rd at the Maple Lake Township Hall, 6298 Bishop Avenue NW and Highway 37, Buffalo, Minnesota 55313.

As required by Statute, a Meeting Notice was published in the Howard Lake Harold Journal July 15, 2019, and mailed to all property owners of record per the Wright County Tax Files on July 17, 2019.

The meeting was attended by 49 people, including Mike Raiche, Chairperson, Tony Heying – Vice Chair, Bob Porter – Treasurer and acting Secretary, and Bob Johnson – Director, and a total of 36 registered lake property owners.

The meeting was called to order by Mike Raiche at 8:30AM.

1. Secretary's report:

- A. Minutes of the 2018 MLIDWC were handed out to meeting attendees on registration at the beginning of the meeting, as well as having been posted on the MLIDWC website
- B. A motion was made by Betty Meyers to approve the minutes as written. The motion was seconded by Betty Thomes. There being no further discussion, the minutes were approved by a unanimous vote of the membership.
- C. The membership was informed that all meeting notices and minutes are posted on the Maple Lake – Lake Property Owners Association, Inc. (ML-LPOA, Inc.) website under the MLIDWC tab.

2. Treasurer's report:

- A. A summary of the MLIDWC's financial activity since the last meeting was presented, with the following highlights:
 - i. The County wired \$21,939 into the MLIDWC checking account, the proceeds of the 2019 first half assessment.
 - ii. The \$5,000 advance received from the MLLPOA in 2018 was repaid from these funds.
 - iii. \$17,603 has been spent on approved projects, including \$16,761 for weed control, and \$842 for county fees and administrative expenses.
 - iv. The bank account balance is \$4,341, with an additional \$18,249 due from second half assessment collections.
 - v. A LID member requested copies of the treasurer's report be made available for distribution at the next meeting.
- B. A motion to approve treasurer's report was made by Lisa Breuer, seconded by Betty Moore. Motion was approved unanimously with no further discussion.

3. Budget Overview:

G

The Chairman presented slides of aerial photos showing treated and untreated areas of invasive species in Maple Lake.

- A. Weeds were treated in early June
 - i. A total of 44.5 acres were treated with chemicals. This is the largest area the DNR has approved for treatment in a single year in recent history.
 - ii. The treatment cost \$82,000, of which \$32,000 will be paid from the proceeds of the 2019 MLIDWC assessment, and the balance, or \$52,000 by the ML-LPOA, Inc. using proceeds from the ice fishing derby.
 - iii. Multiple property owners complained about the lack of response by the vendor – PLM Lake and Land Management Corp. - to phone calls. A recommendation was made to appoint one person within the MLIDWC to be a point of contact with PLM to help improve communications, and to obtain bids from other vendors for next year's treatment.
 - iv. Several members discussed the effectiveness of the treatment, which seems to be working, but it is too early to make a final determination. Two areas treated were larger than 10 acres, and are guaranteed for 3 years.
- B. The culvert project approved last year for 2019 was briefly discussed.
 - i. \$6,000 still remains in the budget for this work
 - ii. Three potential projects are slotted for review and potential completion.
 - iii. We are waiting for Wright County Soil and Water to provide engineering and guidance on what will be approved and the cost.
- C. The proposed assessment for 2020 was discussed.
 - i. Three levels were presented - \$150, \$200, or \$250 per property.
 - ii. The President discussed the costs of treatment at different levels, continuing this year's program into 2020. The level of treatment desired determines how much the assessment will be.
 - iii. The treatment applied in 2019 provided a good start on guaranteed areas, but there is still a need to treat larger areas next year, along with expanded bands of milfoil.
 - iv. A general discussion was held regarding the availability of other funding sources, including from sponsored gambling activities and the ice fishing derby.
 - v. A motion was made to vote on the different levels of assessment by Cheryl Meyer and seconded by Donald Latour. The vote for the \$150 assessment was approved by 19 votes out of 36 eligible to vote. The 2020 assessment will be \$150.00 per assessable property.

4. Officer/Director Election – Secretary Position:

Nominations were requested from the floor for the open Secretary position. There being none, property owner Dan Valenta ran unopposed. Bette Meyer made the motion to nominate Dan Valenta to the position of Secretary, seconded by Greg Thomes. There being no further discussion, a vote was taken and Dan was unanimously elected to fill the open position for a three year term expiring in 2022.

5. New Business:

- A. A recommendation was made to change the annual meeting date from the first Saturday in August to the third Saturday of April each year. After a brief discussion, a motion was made by Tony Heying, seconded by Gary Burau, to move the annual MLIDWC meeting date, effective 2020, to the third Saturday in April. The motion passed unanimously.
- B. A general discussion was held regarding the current lake level, and ideas were presented regarding how it can be controlled. Discussions included the culvert being set to maintain lake water height, and the channel being plugged with bogs becoming a problem. No action was taken.
- C. A suggestion was made to have the MLIDWC work to keep the new culvert under Highway 55 cleared. It was decided this project was more appropriately handled by the MLLPOA.
- D. Greg Thomes suggested a vote be taken to see if there was interest in reviewing available options to control lake water height. A majority of attending members voted in favor.

There being no further business, a motion was made by Bill Ruddle to adjourn the meeting, seconded by Cheryl Meyer, and approved unanimously.

Meeting was adjourned at 9:55 AM August 3th, 2019.

Respectfully submitted;

Robert Porter
Treasurer and Acting Secretary

Maple Lake Improvement District Wright County (MLIDWC)

Assesment Year 2020

8/3/2019

Approved Projects and Costs					Assessed
Aquatic Invasive Species (AIS) Control: Product/Service	Species	Vendor	Units:		Total
			Desc.	Price	Count
Pre-Treatment Delineation	All	TBD	Acres	\$ 1,800.00	1
Aquathol K Chemical Application	All	TBD	Acres	161.45	11
Renovate Chemical Application	All	TBD	Acres	1,809.00	21
Subtotal					41,564.95
<u>Wright County Soil & Water</u>					
Culvert Project(s)		TBD	-	-	0
<u>Administrative</u>					
D&O Insurance		TBD	Members	750.00	1
County LID Fees Annual Mtc.		Wright Co.	Members	0.45	292
Lake Monitoring Exp Reimb		Volunteers	Actual	630.00	1
MLID Annual Mailing/Printing		MLID BofD	Members	2.50	292
Subtotal					2,241.40
Totals					43,806.35
Total Membership					292
MLIDWC Budget 2020 - Total					150.00

12

Eurasian Watermilfoil in Maple Lake

(WBIC# 86-0134)

Wright County, MN

Late-Spring Survey – May 29-30, 2019



Survey, Analysis, and Reporting by:

James A. Johnson – *Aquatic Ecologist, Freshwater Scientific Services, LLC*



Prepared for PLM Lake & Land Management Corp. – June 2019

Survey & Analysis Methods

Late-Spring EWM Delineation Survey

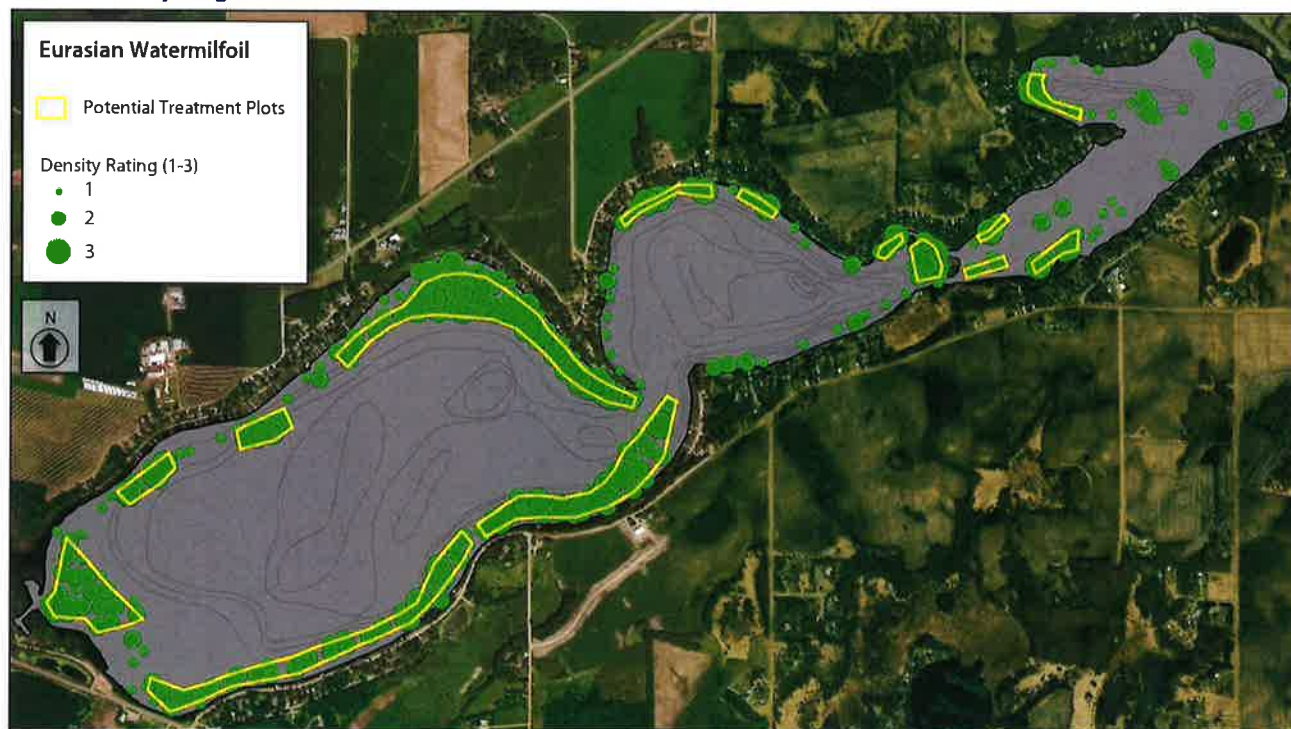
Freshwater Scientific Services, LLC completed a late-spring Eurasian watermilfoil (EWM) delineation survey for Maple Lake (#86-0134) on May 29-30, 2019. During this survey, we navigated a meandering search path over the vegetated portion of the lake. While navigating this path, we used a combination of surface observations (using polarized sunglasses), rake tosses, and sonar readings to locate and delineate areas of EWM growth. Sonar and visual assessments were conducted continuously, with subsequent rake tosses to assess EWM abundance at locations where plants were not identifiable from the surface. At each location where EWM was found, we recorded the GPS coordinates, and documented water depth, EWM plant height, and EWM abundance (1 to 3 scale as described below).

Score	Visual	Rake
1	Light EWM / Solitary EWM plants	1-2 stems
2	Moderate EWM / Dense patches	3 to 9 stems
3	Dense EWM / Uniform matted EWM	10+ stems

We entered the recorded locations, water depths, EWM plant heights, and EWM densities into desktop GIS software and projected the results over aerial imagery of the lake. We then delineated beds of EWM growth in the surveyed areas, and calculated the area, mean water depth, and mean EWM density within each of the identified plots (using point data).

I

Maple Lake (#86-0134)
2019 Late-Spring Delineation of Eurasian Watermilfoil



Surveyed: May 29-30, 2019
Methods: Visual, Rake, Sonar
Surveyor: JA Johnson



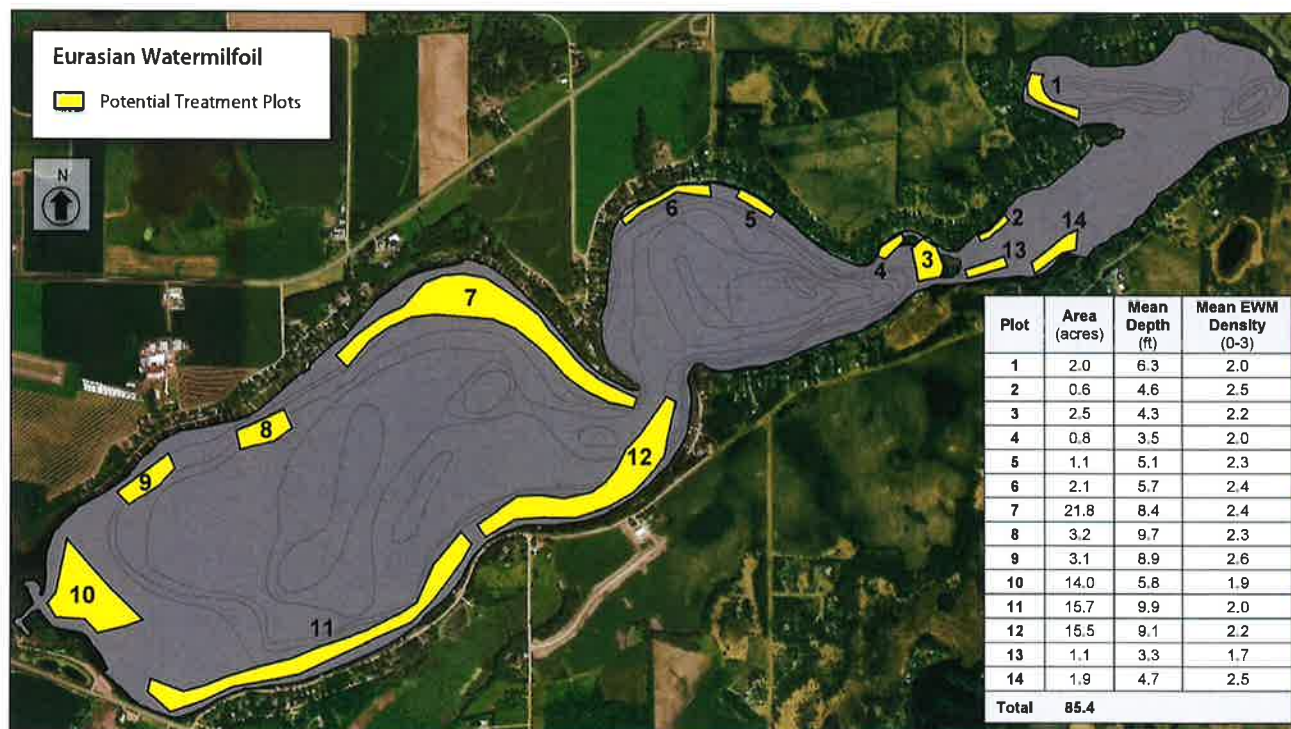
Map produced for PLM Lake & Land Mgmt by:



15771 Creekside Lane
Osseo, MN 55369
fixmylake.com
(651) 335-8696

I

Maple Lake (#86-0134)
2019 Late-Spring Delineation of Eurasian Watermilfoil



Surveyed: May 29-30, 2019
Methods: Visual, Rake, Sonar
Surveyor: JA Johnson



Map produced for PLM Lake & Land Mgmt by:



15771 Creekside Lane
Osseo, MN 55369
fixmylake.com
(651) 336-8696



Legend

Maple Treatment Tracks 5-20-19

Maple_Wright_2019_CLP_Approved



Source: Esri, DigitalGlobe, GeoEye, Earthstar Geographics, CNES/Airbus DS, USDA, USGS, AeroGRID, IGN, and the GIS User Community

Project Name:

Maple, CLP Treatment 5-20-19

Resource:

Maple (86013400)

County:

Wright

Watershed:

North Fork Crow River

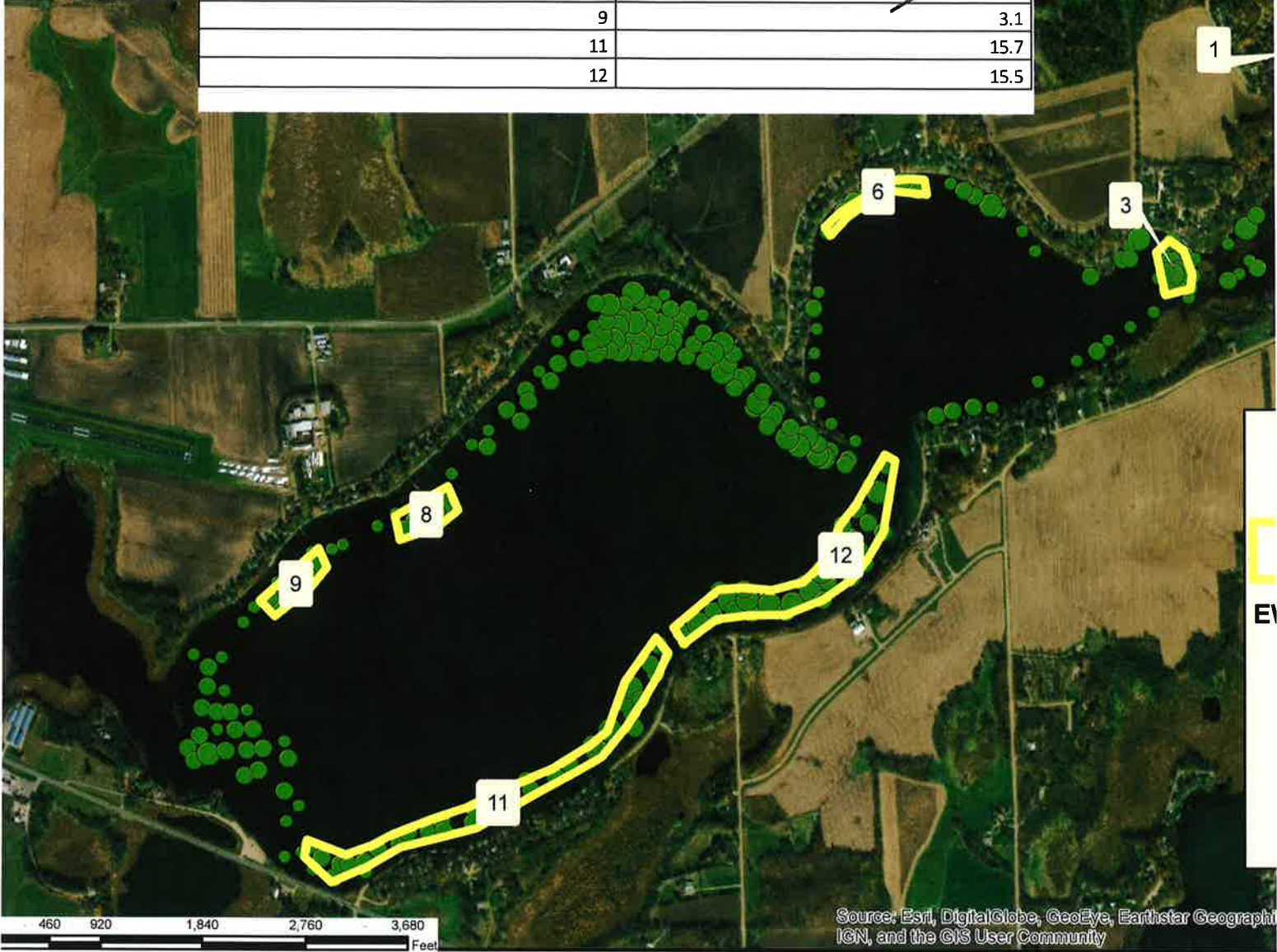
leto:
511 Maras Street
hoknnao MN 55370

Phone:(866) 687-5253
servicemw@nlnm.com

Brainerc
2509 Business Highway 37
Brainerd MN 56401



Plot	Acres
1	2
3	2.5
6	5.7
8	3.2
9	3.1
11	15.7
12	15.5



Project Name: Maple EWM 47.7 Acres	Resource: Maple (86013400)	County: Wright
--	--------------------------------------	--------------------------

Vetro:
1511 Maras Street
Shakopee, MN 55379

Phone:(866) 687-5253
servicemw@plmcorp.net

Mike Raiche

From: Patrick Selter <patrick@plmcorp.net>
Sent: Saturday, June 8, 2019 9:37 AM
To: Mike Raiche
Subject: Maple Pricing
Attachments: MapleEWM29May2019.pdf

Mike,

Below is the pricing based upon the areas we discussed using Procellacor. Any bed over 10 acres in size will have a three year guarantee meaning no dense milfoil for three years. I suggest applying for the permit with the max of 47.7 acres and see what we get in return. I also put pricing for the other plots if you want to substitute.

Plot	Acres	Mean Depth	PDU	total PDU	Cost
1	2	6.3	4	50.4	\$ 3,420.65
3	2.5	4.3	4	43	\$ 2,918.41
6	5.7	2.1	4	47.88	\$ 3,249.62
8	3.2	9.7	3.5	108.64	\$ 7,373.40
9	3.1	8.9	3	82.77	\$ 5,617.60
11	15.7	9.9	3	466.29	\$ 31,647.10
12	15.5	9.1	3	423.15	\$ 28,719.19
Total	47.7			1222.13	\$ 82,945.96

Other Plots

Plot	Acres	Mean Depth	PDU	total PDU	Cost
2	0.6	4.6	5	13.8	\$ 936.61
4	0.8	3.5	5	14	\$ 950.18
5	1.1	5.1	5	28.05	\$ 1,903.75
7	21.8	8.4	3	549.36	\$ 37,285.06
10	14	5	3	210	\$ 14,252.70
13	1.1	3.3	4	14.52	\$ 985.47
14	1.9	4.7	4	35.72	\$ 2,424.32
Total	41.3			865.45	\$ 58,738.09

Patrick Selter, V.P.
Aquatic Invasive Species Specialist



1511 Maras Ave
Shakopee, MN 55379

arj

A	B	C	D	E	F	G	H	I	J	K
Plan 2019	Plot	Acres	Est Plan Cost 2019	Acres	Mean Depth		Total Costs	\$\$/acre	Tentative Plan	
Little	1	2	\$3,420.65	2.0	6.3		\$3,420.65	\$ 1,710.33	Access	\$0.00
	2	0.6			4.6		\$936.61	\$ 1,561.02		
Middle	3	2.5	\$2,918.41	2.5	4.3		\$2,918.41	\$ 1,167.36	Little Maple	\$3,420.65
	4	0.8			3.5		\$950.18	\$ 1,187.73	Middle Maple	\$6,168.03
	5	1.1			5.1		\$1,903.75	\$ 1,730.68	Big Maple	\$73,357.29
	6	2.2	\$3,249.62	2.2	5.7		\$3,249.62	\$ 1,477.10		
Big	7	21.8			8.4		\$37,285.06	\$ 1,710.32		\$82,945.97
	8	3.2	\$7,373.40	3.2	9.7		\$7,373.40	\$ 2,304.19		
	9	3.1	\$5,617.60	3.1	8.9		\$5,617.60	\$ 1,812.13		
	10	14			5.8		\$14,252.70	\$ -		
	11	15.7	\$31,647.10	15.7	9.9		\$31,647.10	\$ 2,015.74		
	12	15.5	\$28,719.19	15.5	9.1		\$28,719.19	\$ 1,852.85		
	13	1.1			3.3		\$985.47	\$ 895.88		
Little	14	1.9			4.7		\$2,424.32	\$ 1,275.96		
		85.5	\$82,945.97	44.2			\$141,684.06	\$ 1,876.61		

K

WebSite Posting



2019

[8.3.2019 MLIDWC Meeting Minutes](#)

[5.7.2019 MLIDWC Meeting Minutes](#)

[3.5.2019 MLIDWC Meeting Minutes](#)

(J) Email Finals to County/State -Etc

ML -Township

MLIDWC - Documents to township



Board

Attached are the documents from our Annual MLIDWC meeting.
Date of Meeting 8-3-2019
Budget was prepared for Calendar year assessment 2020

Documents enclosed:

Meeting Agenda
2020 Budget

2019 Treasure report & current balance

Meeting minutes

- > Financial expenditures & future plans
 - o Budget Overview
- > Status of projects
- > Plans for 2020 yr.
- > Election
- > New business

Wright County Commissioners

MLIDWC Annual LID meeting documents to WC board



Attached are the documents from our Annual MLIDWC meeting.
Date of Meeting 8-3-2019
Budget was prepared for Calendar year assessment 2020

Documents enclosed:

Meeting Agenda

2020 Budget

2019 Treasure report & current balance

Meeting minutes

State

MLIDWC Annual LID meeting documents to state



John

Attached are the documents from our Annual MLIDWC meeting.
Date of Meeting 8-3-2019
Budget was prepared for Calendar year assessment 2020

MPCA

MLIDWC



John

Attached are the documents from our Annual MLIDWC meeting.
Date of Meeting 8-3-2019
Budget was prepared for Calendar year assessment 2020