

Eurasian Watermilfoil in Maple Lake

(WBIC# 86-0134)

Wright County, MN

Early-Fall Delineation Survey – September 27-28, 2017



Survey, Analysis, and Reporting by:

James A. Johnson – *Aquatic Ecologist, Freshwater Scientific Services, LLC*



Prepared for PLM Lake & Land Management Corp. – September 2017

Survey & Analysis Methods

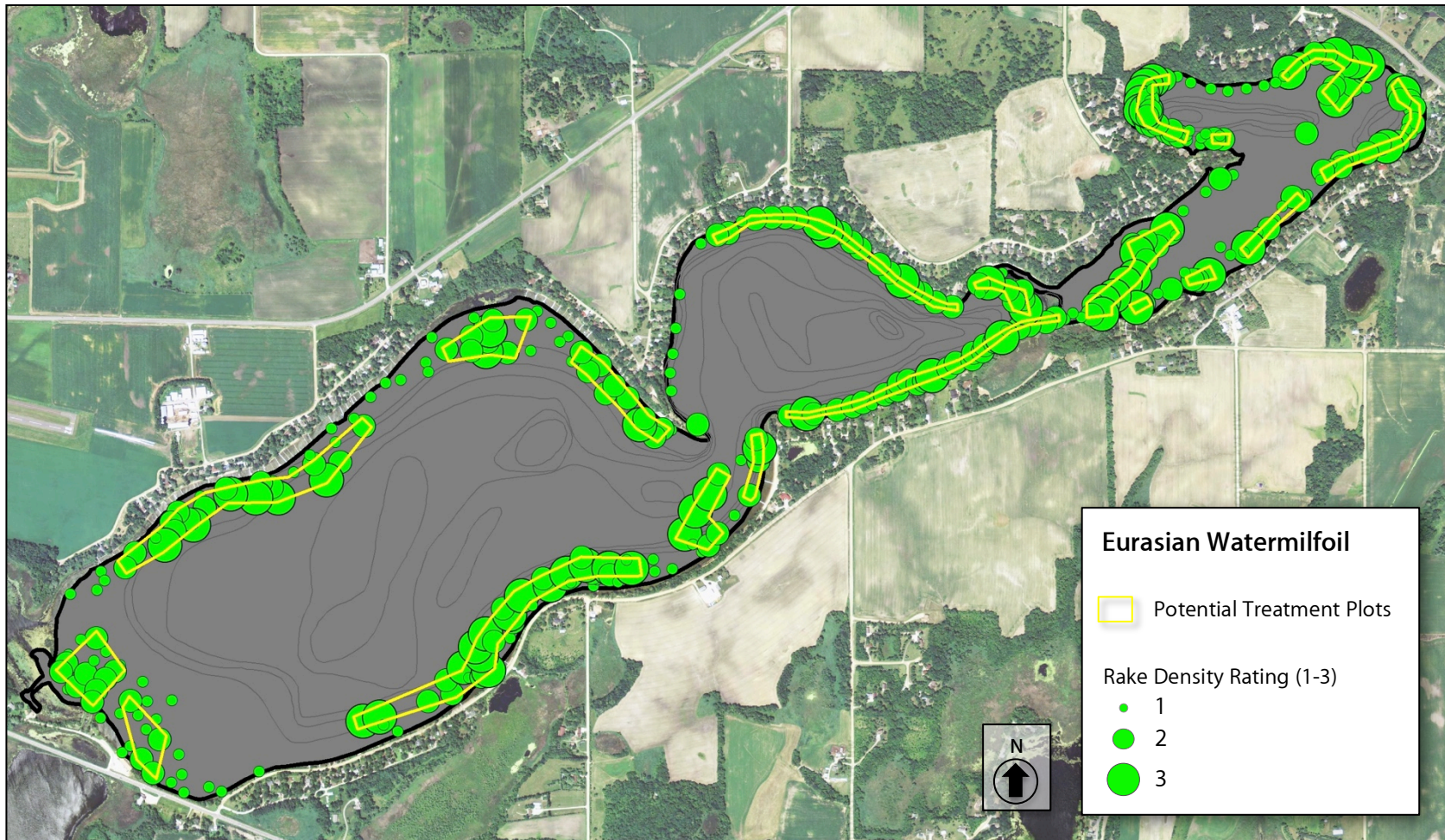
Early-Fall EWM Delineation Survey

Freshwater Scientific Services, LLC completed a late-season delineation survey for Eurasian watermilfoil (EWM) in Maple Lake (#86-0134) on Sept 27-28, 2017. During this survey, we navigated a meandering search path over the vegetated portion of the lake. While navigating this path, we used a combination of surface observations (using polarized sunglasses), rake tosses, and sonar readings to locate and delineate areas of EWM growth. Sonar and visual assessments were conducted continuously, with subsequent rake tosses to assess EWM abundance at locations where plants were not identifiable from the surface. At each location where EWM was found, we recorded the GPS coordinates, and documented water depth, EWM plant height, and EWM abundance (1 to 3 scale as described below).

Score	Visual	Rake
1	Light EWM / Solitary EWM plants	1-2 stems
2	Moderate EWM / Dense patches	3 to 9 stems
3	Dense EWM / Uniform matted EWM	10+ stems

We entered the recorded locations, water depths, EWM plant heights, and rake densities into desktop GIS software and projected the results over aerial imagery of the lake. We then delineated beds of EWM growth in the surveyed areas, and calculated the area and mean EWM density within each of the delineated beds (using point data).

Maple Lake (#86-0134)
2017 Early-Fall Delineation of Eurasian Watermilfoil



Surveyed: Sept 27-28, 2017
Methods: Visual, Rake, Sonar
Surveyor: JA Johnson

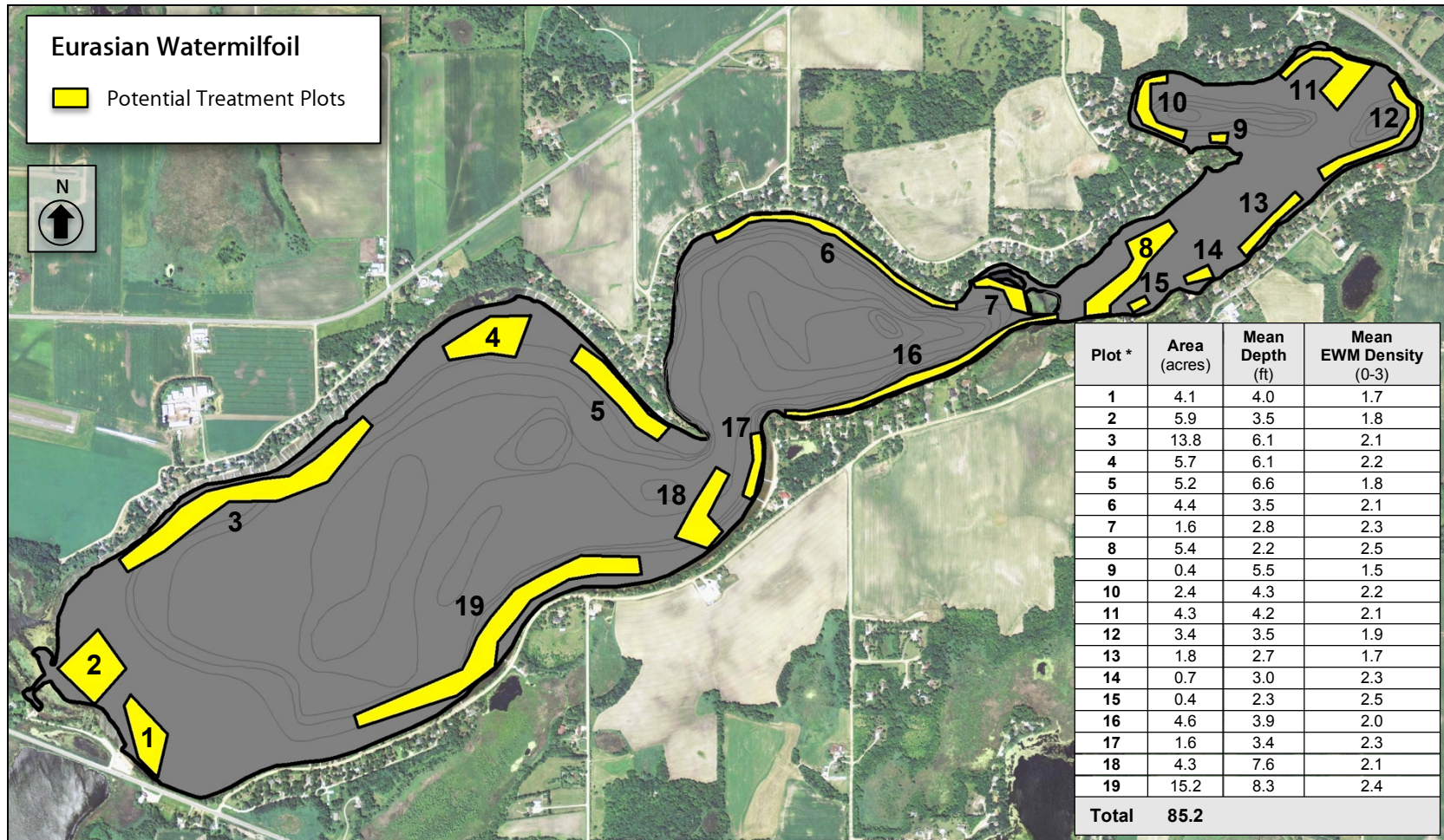


Map produced for PLM Lake & Land Mgmt by:



15771 Creekside Lane
Osseo, MN 55369
fixmylake.com
(651) 336-8696

Maple Lake (#86-0134)
2017 Early-Fall Delineation of Eurasian Watermilfoil



Surveyed: Sept 27-28, 2017
 Methods: Visual, Rake, Sonar
 Surveyor: JA Johnson



Map produced for PLM Lake & Land Mgmt by:



15771 Creekside Lane
 Osseo, MN 55369
 fixmylake.com
 (651) 336-8696